



STREAMLINING INDONESIA'S
POLICY LANDSCAPE
**Bridging the gap between National
and sub-national governments**

www.gbpn.org

CONTENTS

- 3 A STRATEGY FOR INDONESIA:
Bridging the gap between
agenda setters and
implementers
- 4 The Trailblazer of Net Zero
Emission
- 5 Adaptable and Scalable
Implementation for Green Cities
- 6 The Sustainable Road Ahead
for Indonesia

ABOUT GBPN

GBPN aims to tackle the climate emergency by decarbonising one of the earth's most significant carbon pollution sources – the building sector.

We **form powerful coalitions** that bring together the right people in the **right locations** to deliver maximum impact. Working with government and industry through local experts and partners, we support building policy reforms that increase efficiency and drive down emissions.

Together, we're building a healthier, more sustainable world.

A STRATEGY FOR INDONESIA: BRIDGING THE GAP BETWEEN AGENDA SETTERS AND IMPLEMENTERS

Indonesia's national government has set ambitious targets to achieve net zero emissions. However the policy environment in Indonesia means that implementation is the responsibility of sub-national (regional) governments. This can create a disconnect between the vision and the work required to achieve it.

GBPN's Sub-national Strategic Projects Lead, Yeni Indra, said GBPN has supported this important work with its network of green building experts in Indonesia.

"GBPN has years of experience in Indonesia and has been instrumental in promoting best practices for green building implementation and policy reform, particularly at the subnational level,"

Ms Indra said.

"GBPN is now poised to be a crucial ally in Indonesia's journey towards net zero."

Dovetailing Indonesia National Net Zero Goals with Subnational Strategies

Green building implementation at the subnational level plays a pivotal role in achieving national sustainability goals, according to Ms Indra.

"GBPN experts, academics, and policymakers collaborated on several key sub-national projects to find smart ways to offer resources, research, and expertise to support subnational stakeholders," Ms Indra said.

"Their approach dovetails seamlessly with national strategies, facilitating a unified vision for sustainable development."

Indonesia's subnational regions are proving to be the cornerstone of the nation's net-zero ambitions. Ms Indra added that green building implementation at the subnational level is instrumental in achieving Indonesia's overarching sustainability objectives.

Benefits of collaboration

In this exciting partnership, GBPN is playing a vital role in helping enhance the synergy between grassroots and the national level in Indonesia which is pivotal in establishing a united vision for sustainable development. This partnership model demonstrates through cooperation, the gap between grassroots efforts and national aspirations can be effectively bridged.

"By fostering collaboration among high-level stakeholders, including government officials and experts, it ensures that the knowledge and experiences gained at the subnational level inform and enrich national-level strategies."



THE TRAILBLAZER OF NET ZERO EMISSION: HOMES & COMMERCIAL BUILDINGS BEYOND JAVA

Samarinda, a city nestled in the heart of East Kalimantan, has emerged as a trailblazer in Indonesia's pursuit of sustainable urban development. It proudly holds the distinction of being the first city outside of Java to embark on a groundbreaking initiative - measuring the potential for energy savings and developing actionable strategies toward Net Zero Emission Homes.

This achievement showcases Samarinda's commitment to embracing local contexts while strengthening green building and energy-efficient practices.



Samarinda's achievements are credited to its proactive implementation of the mayor's decree, demonstrating an understanding of the city's distinct challenges and opportunities, which is going to be one of Indonesia's New Capital satellite cities.

GBPN has supported the Samarinda Government to tailor strategies to local conditions has resulted in not only enhanced energy efficiency but also has set a course for sustainable urban development that harmonizes with its natural environment

GBPN, in partnership with the Samarinda City Government and experts from university joined in **HIDUP working group**, has been actively involved in the collection of crucial data for energy baselining and focus group discussions.

GBPN's Sub-national Strategic Projects Lead, Yeni Indra, said that the data baseline forms the backbone for the formulation of energy efficiency models and recommendations in the city's technical guidelines.

"GBPN's assistance in helping Samarinda collaborates their efforts demonstrates the impact that can be achieved when government bodies, expert organizations and academia are empowered to work together." Ms. Indra said.

"By gathering and analyzing critical energy data alongside Universitas Tujuhbelas Agustus, Samarinda and Government, this collaboration paves the way for the city's improved energy efficiency." she said.



ADAPTABLE AND SCALABLE IMPLEMENTATION FOR GREEN CITIES: BALI'S REMARKABLE PILOT CITIES FOR SUSTAINABILITY

Bali's Provincial Government has displayed visionary leadership and a remarkable commitment to sustainable urban development. Collaborating closely with GBPN experts and academics from Udayana University, they have initiated the implementation of technical guidelines for clean energy generation. This initiative is particularly crucial in urban areas experiencing rapid growth, fueled by global tourism.



GBPN has provided support to the government through strategic partnerships with research collaborator Monash University and local expert collaborator CORE Udayana. Their joint efforts include focus group discussions and energy baselining to create technical guidelines and building permit requirements to be implemented in the first 2 pilot cities in Bali, Kuta and Gianyar.

Steps towards net zero building targets in bali



City/Region's Context

Collaborative efforts with Bali's stakeholders to suit the region's context and unique challenges



Policy Reform Process

Data collecting and baselining, as well as multiple discussions to integrate technical guidelines into the subnational policy



Achievable Goals

The technical guideline will provide implementable actions and measurable parameter to achieve the region's energy efficiency



Net Zero Buildings

All the efforts culminates into achieving net zero buildings sector in Bali, that are also applicable in other cities in Indonesia

THE SUSTAINABLE ROAD AHEAD FOR INDONESIA

GBPN's approach prioritizes the development and implementation of evidence-based policies that target energy efficiency, reduced emissions, and sustainable construction practices. Through collaborative efforts with governments and industry experts, GBPN strives to create a policy framework that encourages green building practices, energy-efficient technologies, and reduced carbon footprints in the construction and operation of buildings.

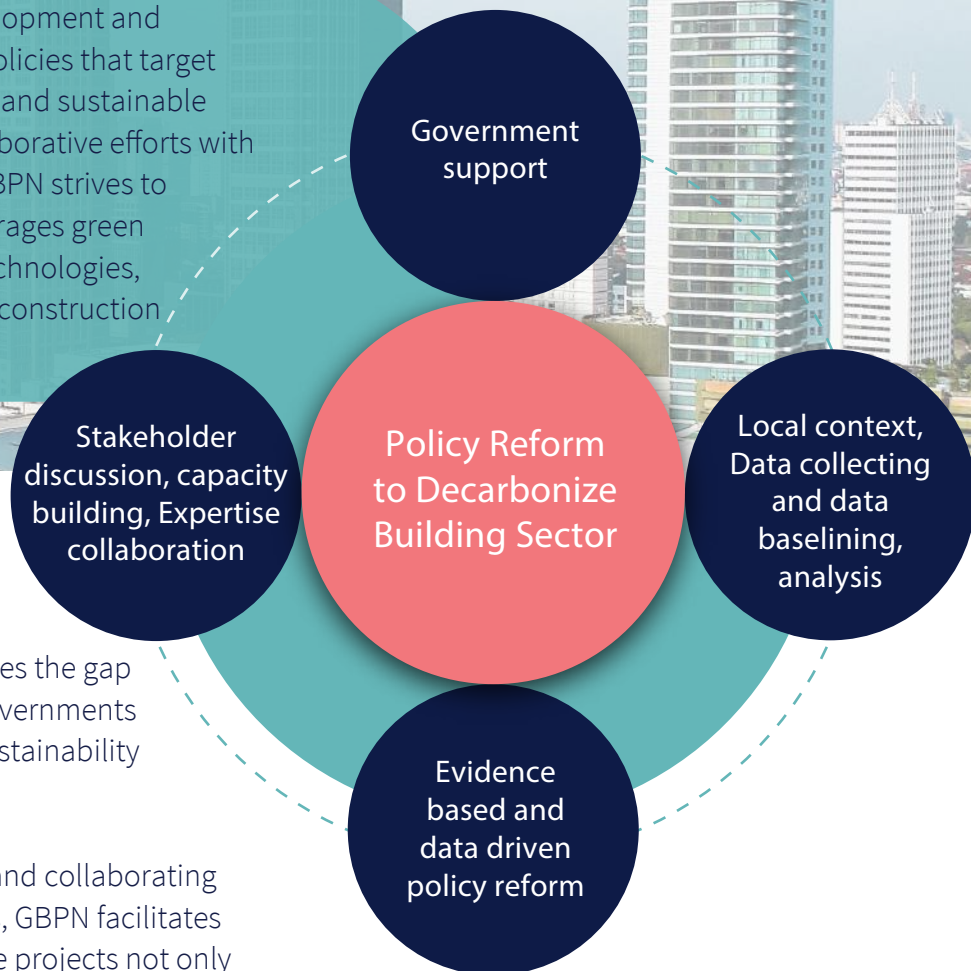
The successful projects in Samarinda and Bali are examples of how GBPN's bottom-up approach effectively bridges the gap between subnational and national governments while simplifying the complexity of sustainability initiatives.

By tailoring strategies to local needs and collaborating closely with subnational stakeholders, GBPN facilitates practical and feasible solutions. These projects not only demonstrate that a localized approach can drive progress but also showcase the transformative potential of subnational engagement, ultimately contributing to **a harmonious alignment between subnational and national sustainability goals.**

By bringing together local stakeholders, experts, and policymakers, we facilitate a collaborative environment where innovative ideas can flourish. Together we recognize the need for solutions, we tailor our approach to **address the specific challenges each region faces.**

GBPN alongside crucial **stakeholders in subnational levels, collects and analyses critical information on building performance, energy consumption, and policy outcomes.** This data-driven approach, alongside the government's expertise to make informed decisions, empowers our effort to target areas for improvement, and track progress effectively.

GBPN is committed to **evidence-based strategies** and works collaboratively with governments by utilizing case studies and best practices to equip them with actionable insights. In doing so, GBPN contributes to ensuring that policy reforms are not merely theoretical but have a proven track record, actively propelling subnational regions in Indonesia toward a more sustainable future



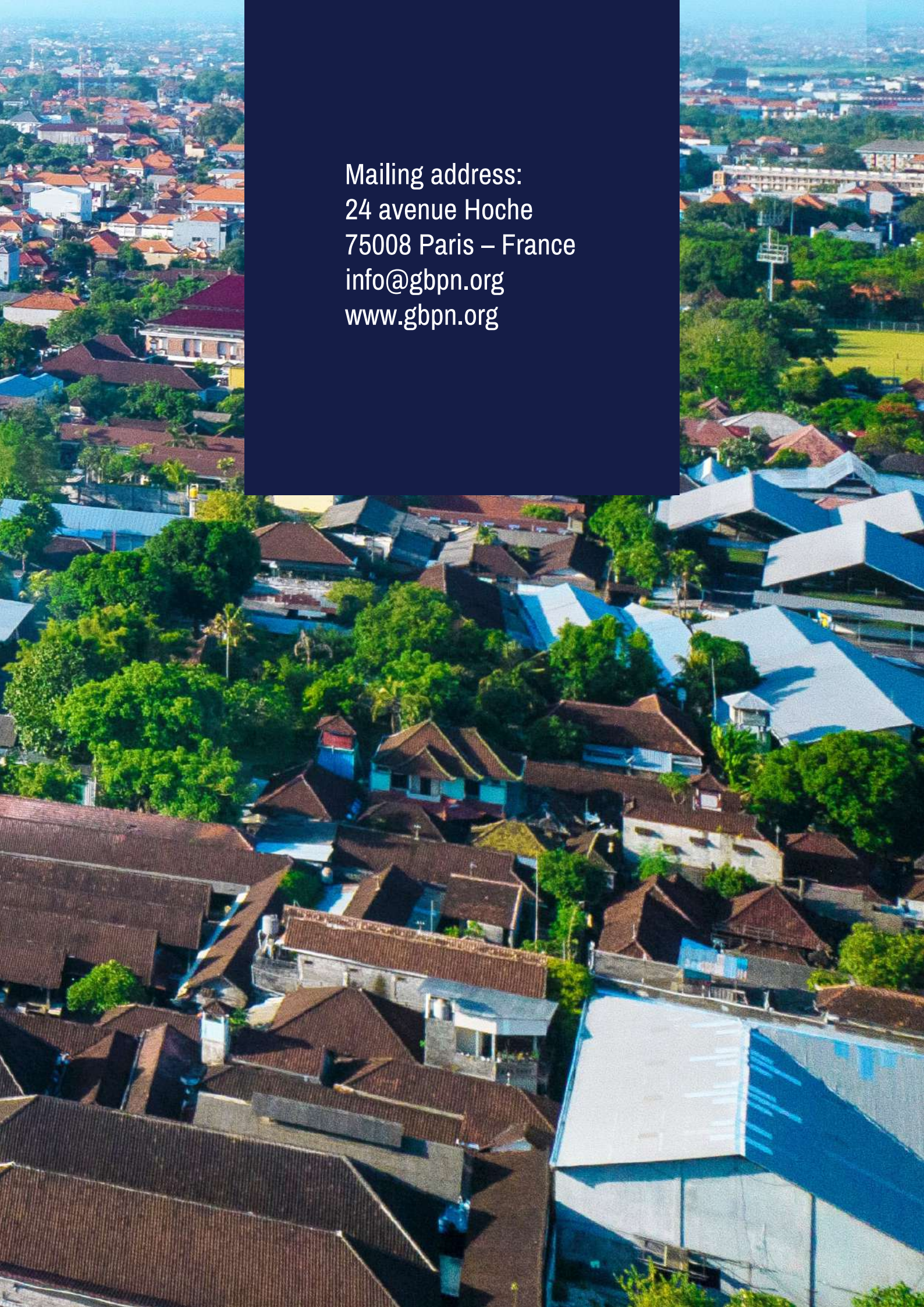


Links to related project outputs - Indonesia version:

[Samarinda Technical guidelines](#)

[Bali Technical guidelines](#)





Mailing address:
24 avenue Hoche
75008 Paris – France
info@gbpn.org
www.gbpn.org